



Between the Lines

Chicagoland News from the



PARKING INDUSTRY LABOR MANAGEMENT COMMITTEE



DECEMBER 2005, VOLUME 2, ISSUE 1

Educational Seminar to Explore Ways to Improve Labor Relations

PILMC offers free program for managers and supervisors

As part of our ongoing mission to improve working conditions for union members, PILMC will offer a free educational seminar on the labor-management relationship.

This innovative seminar will open with a 20-minute video which will present a single scenario as viewed from the union's perspective and the employer's perspective. Following the video, a panel of experts will lead an interactive discussion about the various factors that contribute to the decision-making process. Guided by the expert panel, participants will evaluate the scenario, arriving at a decision of whether or not termination is warranted.

Throughout the discussion, the panel will provide insights about the needs of labor and management and facilitate arbitration between the two viewpoints.

Representing management on the panel will be Derek Barella, an attorney with the firm of Winston Strawn. Charles Orlove, a partner with Jacobs, Burns, Orlove, Stanton & Hernandez, will represent labor. Mediation will be provided by Lamont E. Stallworth, Ph.D. A member of the National Academy of Arbitrators and professor at Cornell University, Dr. Stallworth has arbitrated more than 1,000 cases during his 20-year career.

The seminar is free and open to local stewards, business managers and supervisors of employers that are signatories to the parking industry's contract with Local 727. Business representatives from Local 727

will also be in attendance. On April 5 and 13, 2006 the PILMC will host educational seminars on occupational safety. Details about these seminars will be forthcoming.

EDUCATIONAL SEMINARS

Session 1:
January 12, 2006

REGISTRATION
11:00am – 12:00pm

SEMINAR
12:00pm – 2:00pm

Session 2:
January 13, 2006

REGISTRATION
11:00am – 12:00pm

SEMINAR
12:00pm – 2:00pm

Both sessions will be held at the Hyatt Regency Chicago, located at 151 E. Wacker Drive. Employers will be receiving more information and registration forms for the education seminar by mid-December. Be sure to reserve your spot!

New PILMC Chicago Parking Map in Development for 2006 Launch

Online map will help customers and boost business at downtown lots

Early in 2006, PILMC will launch an exciting new website designed to promote the parking industry in downtown Chicago.

The Chicago Parking Map website will provide the public with easy-to-access information about parking structures located in the downtown area, bordered by Division, Cermak, Halsted and Lake Michigan.

Using the website, customers can search for parking options by entering an address or business name. They can also highlight parts of the map to generate available parking options.

The search produces a "footprint" map of the selected area that indicates the customer's destination and the location of nearby

parking structures. Additional information about each structure is available at the click of a mouse, including address, phone number, hours of operation, payment type, lot type, and number of stalls.

The footprint map will be fully interactive. Customers will have tools enabling them to zoom in or zoom out from any destination in the selected area, or scroll to different areas of the map using directional arrows. As customers zoom in, they will also be able to see the location of entrances and exits for each structure and the traffic directions of one-way streets. The website will also generate walking maps of selected areas.

CONTINUED ON PAGE 2



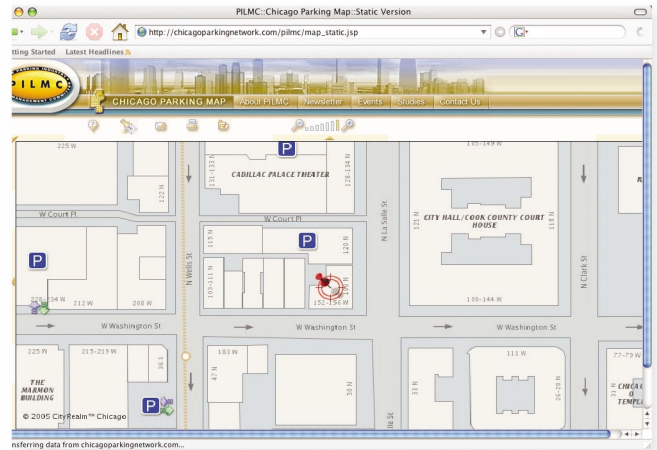
Between the Lines

New PILMC Chicago Parking Map in Development for 2006 Launch CONTINUED

The PILMC Trustees note that the map is not intended to promote any specific operator, or give any unfair advantage to specific lots. Information about each lot — including information about the operator — does not appear until a patron clicks on that lot. Each operator will get equal billing.

The new site will promote the parking industry and benefit the downtown area. Searching for parking creates congestion and wastes time. Some customers are hesitant to come downtown because they are concerned about where to park. With the new website, we'll be able to alleviate those concerns and provide a helpful service to the downtown community while also promoting our member businesses.

The map is available to all union members at no cost. Approximately 188 parking sites are currently signed up to appear on the new website, which is set to launch in early 2006.



PILMC Helps Block Proposed Parking Tax Increase in Chicago

City of Chicago Reconsiders Budget Balancing Measure

This fall, PILMC launched a campaign to educate the public about a proposed city parking tax increase. Our success is an example of how industry and our union work together to protect jobs and consumers.

The campaign began in the wake of the City Budget Director's disclosure that his office was considering a parking tax increase to help close this year's budget gap. PILMC asked our customers and our employees to voice their concerns about a parking tax increase to Chicago aldermen.

PILMC members at all levels contributed to the effort, handing out flyers in garages, hanging posters, and providing press releases to local media. We received extensive media coverage in many key outlets, including spots on NBC 5, Channel 2, ABC 7 News, WBBM radio, and WGN radio. We were able to reach our customers and policymakers, highlighting

the benefits of our industry, and the adverse affects parking tax rates have on the city. (see sidebar, "Parking Taxes in Chicago").

As a result of your efforts, the City Budget Office decided against increasing the parking tax in next year's budget.

However, we are not out of the woods yet. Cook County has yet to propose its budget for next year, and we've been told that they may propose raising parking taxes as a way to increase revenue. We hope to have similar success with our campaign against an increase in the County parking tax.

PILMC's success in opposing the proposed tax increase underscores the need for our organization to continue its efforts to inform and educate elected officials and policymakers. is just an indication of what this partnership can achieve for its members and for the City of Chicago.

Parking Taxes in Chicago: Just the Facts

Chicago's Parking Industry has already paid its dues:

- Chicago's parking taxes have increased five times in the last 10 years.
- In 2005, the City's parking taxes increased by 12.5%.
- Parking taxes in Chicago are the second highest in the nation.

The proposed tax increase would disproportionately affect Chicago residents:

- Two-thirds of all downtown parkers live in Cook County.
- Chicago residents account for 63% of all parkers who live in Cook County.

The parking tax increase would be hazardous to Chicago's long-term economic health:

- 20% of downtown offices were vacant at the close of the third quarter in 2005.
- Since the last tax increase, downtown parking stall vacancies increased from 15% to 20%.
- Higher parking taxes lead to a decline in downtown office tenancy and retail/entertainment business.
- Reduced business downtown leads to an overall reduced tax base.

